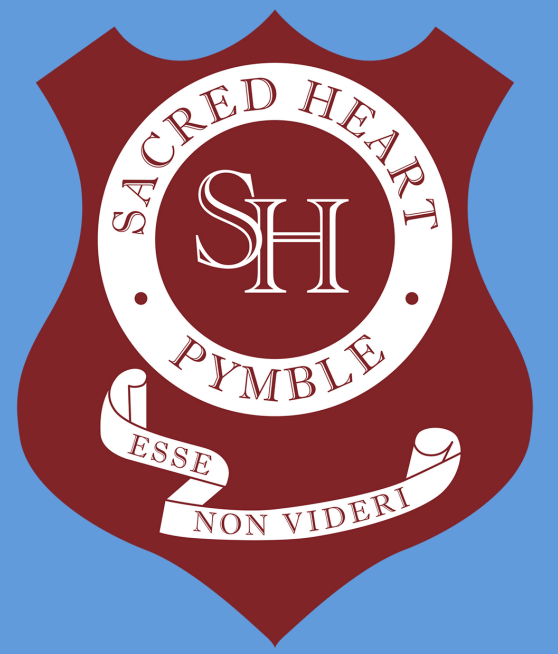
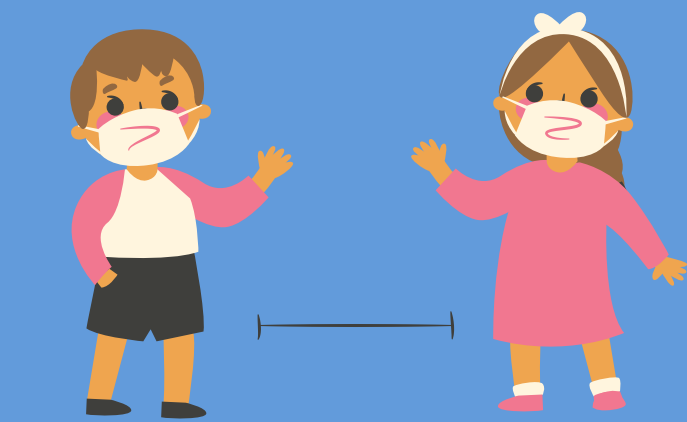


SAFE RETURN TO SCHOOL PROTOCOLS



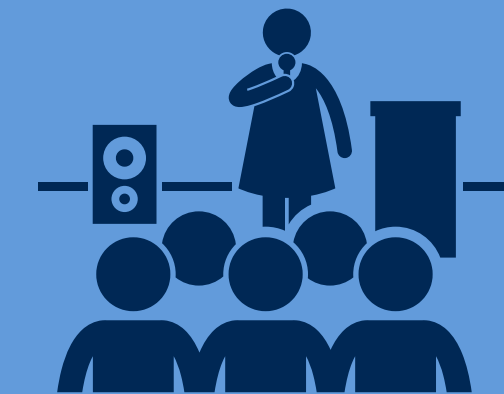
Any staff or student with the mildest of COVID-19 symptoms must get tested and isolate until they receive a negative result. Must be symptom free to return to school



Social distancing for students and teachers where possible



Students eat and play with specified cohort in designated areas



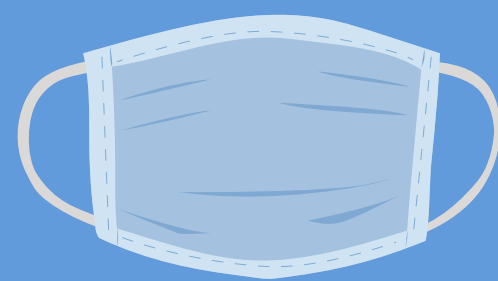
Not permitted: extra curricular contractors, sporting competitions, singing, assemblies, school performances, excursions



Outdoor lessons where practical



No parents or non-essential visitors permitted on site. School pick up will be slightly staggered from front gate



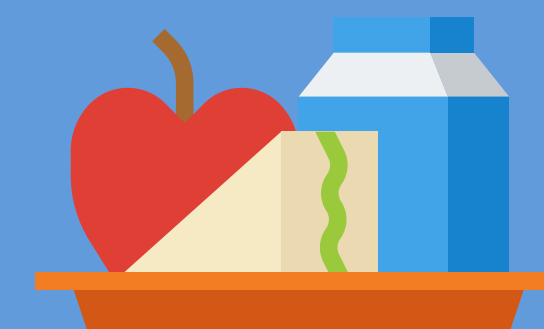
Face masks to be worn by all teachers and staff. Strongly recommended for primary school children



Regular inspections of fans and air conditioners will continue. Air quality monitors are utilised in classrooms. Windows and doors remain open



Enhanced cleaning and hygienist services delivered daily



School canteen is closed



Students sanitise on entry to school and classrooms.